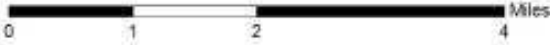


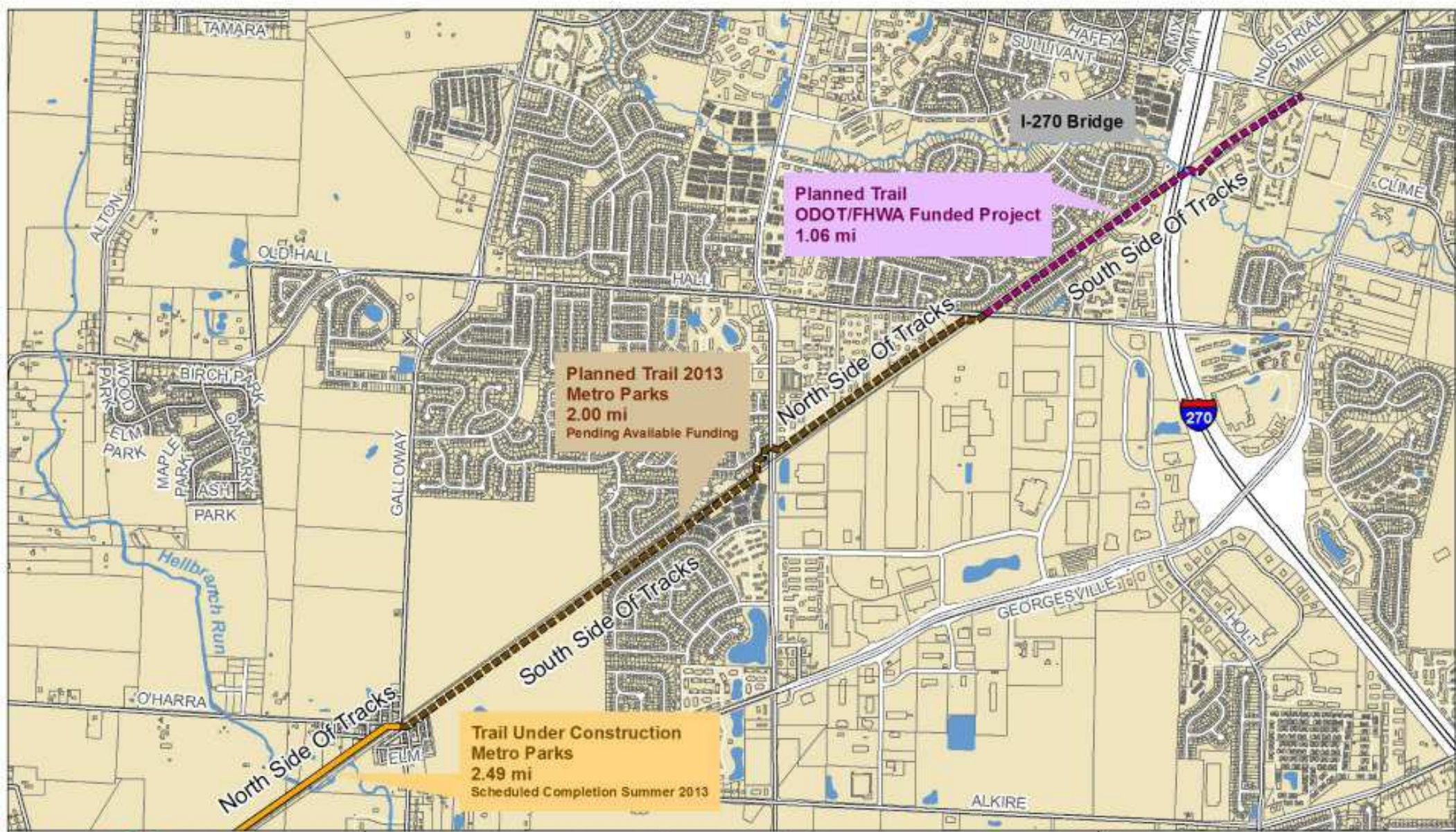



Metropolitan Park District
 Columbus and Franklin County
 1000 West Main Street
 Westerville, OH 43081
 Tel: 614.891.0700
 Fax: 614.891.4208
www.metroparks.org

Camp Chase Trail

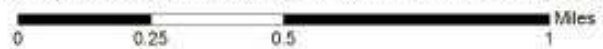


- Legend**
- Active Rail Line
 - Abandoned Rail Line
 - Water Body
 - Metro Park




Metropolitan Park District
 Columbus and Franklin County
 1000 West Main Street
 Westerville, OH 43081
 Tel: 614.891.0700
 Fax: 614.891.4208
www.metro-park-district.org

Camp Chase Trail Phase III Galloway to Sullivant Planned Construction



Legend



Metropolitan Park District

Columbus and Franklin County

1468 West Main Street

Wapakoneta, OH 45387

Ph: 937.861.6750

Fax: 937.861.6208

www.mpd.org

Camp Chase Trail - Phase 3, Section 1

ODOT/FHWA Funded Project



Legend

- Camp Chase Trail Alignment
- Camp Chase Trail Temporary Easement
- Active Railroad
- Road
- Water Body

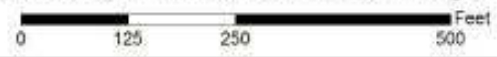


I-270 Bridge



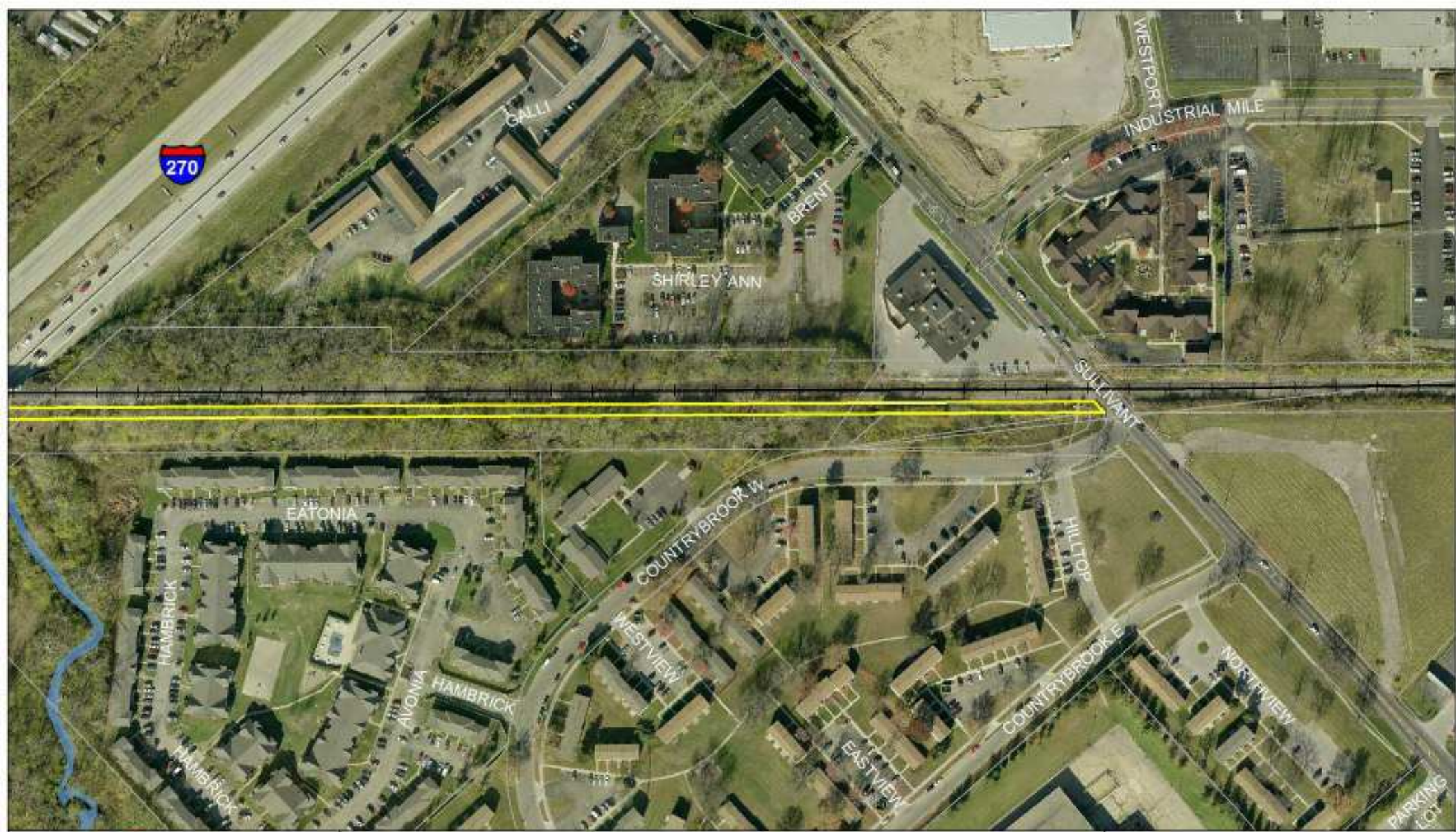
 Metropolitan Park District
 Columbus and Franklin County
 1468 West Main Street
 Wapakoneta, OH 45387
 Ph: 937.861.6750
 Fax: 937.861.6208
www.metroparkdistrict.net

Camp Chase Trail - Phase 3, Section 2 ODOT/FHWA Funded Project



Legend

-  Camp Chase Trail Alignment
-  Camp Chase Trail Temporary Easement
-  Active Railroad
-  Road
-  Water Body



 Metropolitan Park District
 Columbus and Franklin County
 1468 West Main Street
 Wapakoneta, OH 45387
 Ph: 937.861.6750
 Fax: 937.861.6208
www.metparkdistrict.net

Camp Chase Trail - Phase 3, Section 3 ODOT/FHWA Funded Project



Legend

-  Camp Chase Trail Alignment
-  Camp Chase Trail Temporary Easement
-  Active Railroad
-  Road
-  Water Body